

Urban Pockets 2005

Maps depicting unincorporated lands located within the cities' Urban Service Areas (USAs)

San Jose - 3 of 20

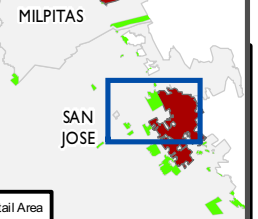
- Urban Service Area
- Urban Pocket <= 150 acres
- Urban Pocket >150 acres
- Incorporated Lands
- Unincorporated Lands
- 6000 Scale Index Map



0 250 500 1,000
Feet

This map produced by the Santa Clara County Planning Office. The GIS data was compiled from various sources. While deemed reliable, the Planning Office assumes no liability.
y:\Projects\Pockets\Pockets2005\Projects\San Jose Pockets.mxd

Overview



Detail Area